



Printing Guide

Epson 7600

Initial Set-Up Procedures

Pre-Sets

Your FineArtPrints representative will set up your defaults and printing pre-sets when installing your Cinemage 200 system. However, if something should happen to your operating system or the pre-sets are changed somehow, this information sheet will guide you through the basics of restoring the proper system defaults for print production.

Default Printer Settings

1. Click on the **Start** button and Select **Control Panel** from the Start-up menu
2. Click on **Printers and Faxes** and Double Click on the *Epson 7600 icon*
3. Click on **Printer** and Click on *Properties*
4. Select *Printing Preferences*
5. Under the **Main** Category Tab:
 - a. Set the *Mode* to **Quality** NOT Speed
 - b. Set the *Image Quality* to **Photo-Realistic**
6. Under the **Paper** Category Tab:
 - a. Set the *Paper Source* to **Paper Roll**
 - b. Set the *Paper Roll* Option to:
 - i. **Auto Rotate** = *yes*
 - ii. **Auto Cut** = *yes*
 - iii. **Roll Width** = *24 inches*
7. **Click OK** on the Bottom Toolbar
8. Right Click on the *Epson 7600 Printer* Icon and set as **default Printer**
9. Close Dialogue box, accepting all changes

Default Page Sizes

If these should be deleted somehow, you will have to contact your FineArtPrints representative and have them restored. There may be a programming fee if this should happen so be careful not to alter or delete them.



Purchasing, Downloading, and Opening A File

Purchasing An Image

1. From the FineArtPrints Home Page, **login** using your Dealer ID and Password
2. Using the **Image Title** or **ID number** supplied by the Customer, **Search** the Database for the Image

User ID: Your Nam
Password: ●●●●●●
Dealer Login

Display (Vignette) - FineArtPrints

Copyright to annie-orangetiki

← Previous entry
➤ Next entry
Owner: Annie Wilkinson Prints
Artist: Wilkinson, Annie
Title: Orange Tiki
Subject: cocktail party girl
Keywords: cocktail party ; girl ; woman ; poodle dress ; 50s theme ; 1950s ; tiki ; ART ; Giclee
Image Number: annie-orangetiki


Select	Price	Size	Description
<input type="checkbox"/>	10.00CAD (7.50USD)	1650x1627	Download to print Small - 8.5" x 11"
<input checked="" type="checkbox"/>	16.00CAD (12.00USD)	2198x2168	Download to print Medium - 11" by 17"

Add to basket Purchase

3. Double Click on the Image once you have found it in the database
4. Scroll down to the Sizes available section and Click on the ordered Size
5. Click on **Purchase** (or on Add to Basket if you're purchasing more than one image or multiple copies)

6. **Please Read and ACCEPT** the terms and conditions of your purchase – you may only print one copy of each image per purchase. Also choose to display secure and non-secure items.

Product accept - FineArtPrints

Image	Description	Count	Price	Total	Option
	Download to print Medium - 11" by 17"	1	16.00CAD (12.00USD)	16.00CAD (12.00USD)	Delete
				16.00CAD (12.00USD)	

Customer Terms and Conditions

ACT Cinemage retains rights of all images contained within this site in regards to intellectual property for itself and its contributors. All images are fully rights-protected by international Copyright Law to protect the creators of the art and photography. Images may be downloaded under the following terms and conditions:

Standard Resolution images (up to 650 pixels) are for personal use only. "Personal Use" means the private, non-commercial use of the images for reference, research and any other private, non-business purpose.

Premium Resolution images (up to 1400 pixels) are for personal use or a one-time small business application restricted to a single image for your web page or a print run of not more than 1,000 copies of the image for newsletters, brochures or advertising materials.

Professional Resolution images (up to 2000 pixels) may be used for any advertising, promotional material, web site, and for-sale products, provided the finished product and associated image are limited to a one-time distribution of not more than 20,000 copies of the image. In addition, image purchases may not sell, sublicense, distribute or otherwise grant rights or make available for use by others all or a portion of the Product(s) or Derivative Work(s) in form or formats designed or intended for re-use of the Stock File or Derivative Work(s).

Should you wish exclusivity, higher resolution or to do anything with this Product that is not expressly permitted please register for an account. You may then use the system to negotiate directly with the image owner.

Prohibited Usage

You agree that any application of vendor content outside the agreed usage constitutes an infringement of the International Copyright & Treaties Act, and will be subject to any/all penalties provided under this law.

You are not permitted to use specific government, company or persons' names, initials and emblems for any commercial purposes or to express or imply endorsement or sponsorship of any commercial product, service or activity.

You are not permitted to use or modify images for use in obscene or scandalous works, as defined by the Federal Government at the time the work is created.

Penalties for Usage Outside of Agreed Intent

Declared value of images is minimum US \$1,500. ACT Cinemage will seek a restitution on behalf of its contributors equal to three times the appraised value for use of any and all content outside previously agreed conditions of usage.

Submission of False or Inaccurate Information

Service to any person(s) or other legal entities who provide falsified information regarding mailing address, identity, credit information, usage and intent. Submission of information will be considered grounds for pursuit of action in a court of law.

Disputes will be held in a court of law at the City of Vancouver, British Columbia, Canada.

Company of its content and holds no responsibility for direct or consequential loss or damages incurred as a result of the agreed use of any of our material.

ACT Cinemage Software LP. All rights reserved.
Image providers. All rights reserved.

Eshop payment - FineArtPrints

Image	Description	Count	Price	Total	Option
	Download to print Medium - 11" by 17"	1	16.00CAD (12.00USD)	16.00CAD (12.00USD)	Delete
				16.00CAD (12.00USD)	

Buyer name:

What format:

Credit card type:

card number:

expiry date:

name on Credit Card:

Powered by **CINE MAGE**

Software copyright © 1998-2004 Cinemage Software LP. All rights reserved.
Content copyright © to individual content providers. All rights reserved.

7. Enter your **Dealer ID, Credit Purchase information** and Click on **Purchase** – if a security alert comes up on your browser, choose to proceed. Always choose JPG format.
8. Click on the download link to download your file...

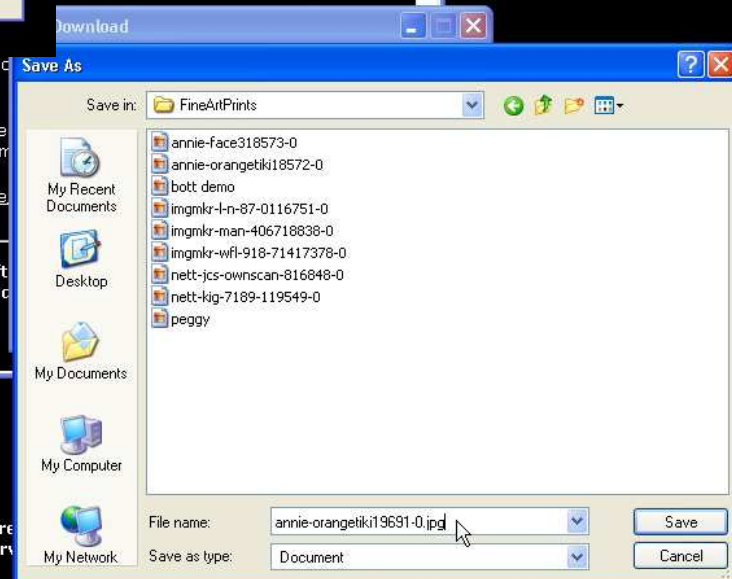
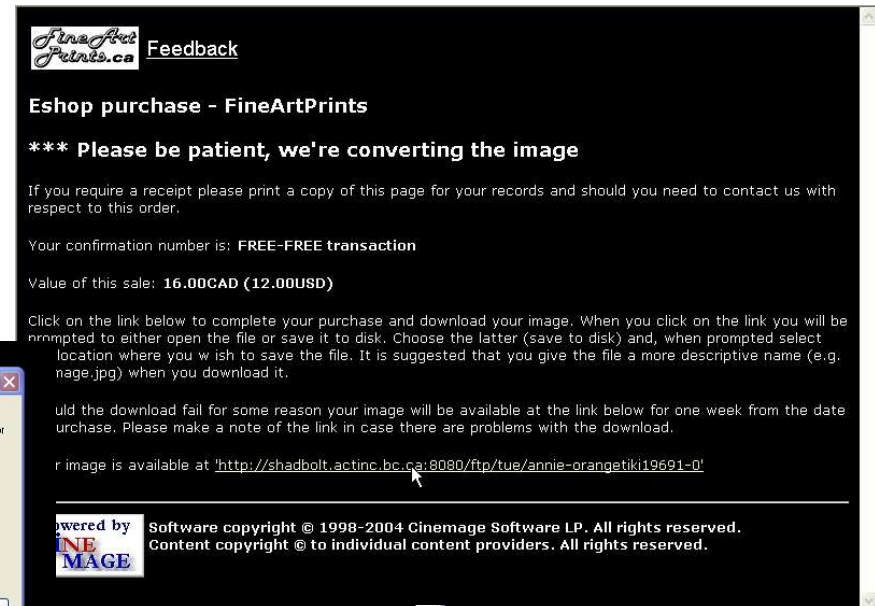
Downloading

1. Once you have Click on the link, a download dialogue box will open on your screen. **Click Save**
2. On the Save dialogue page, select the FineArtPrints folder under My Documents
3. **VERY IMPORTANT – Add** to the file name in the File Name Box the extension **.jpg** or you won't be able to view the file later
4. **Click Save**, the file will download and you can then close the Download Dialogue box if you wish
5. Close all windows on the FineArtPrints website and you're done!



Opening a File

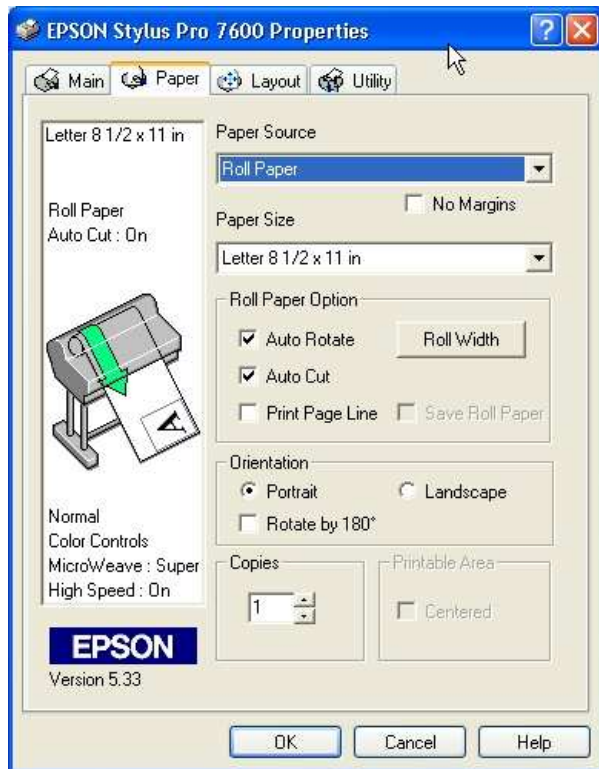
1. **Start** Adobe Photoshop Elements
2. Click on **File** and Click on **Open File**
3. Select FineArtPrints Folder and **double click** on the downloaded file. There should be only the unprinted files you have yet to work with in the folder as you should delete each file once your customer has picked up the completed print. See below for printing instruction for each medium and size of print





Epson 7600 Printing Procedures Photo Glossy, Photo Satin, & BP Art Paper

1. Open the File in the FineArtPrints Folder
2. Click on the **File** tab, Select **Page Set-up**, choose **Printer**, select **Epson 7600** and click on **Properties**
3. On the **Main** tab:
 - a. Select the **Media Type**:
 - **Glossy Print = Premium Glossy Photo Paper**
 - **Satin Print = Premium Semi-Gloss Photo Paper**
 - **Art Prints on BP Art Paper = Textured Fine Art Paper**
 - b. Ensure the **Mode** is Set to **Quality** not **Speed**

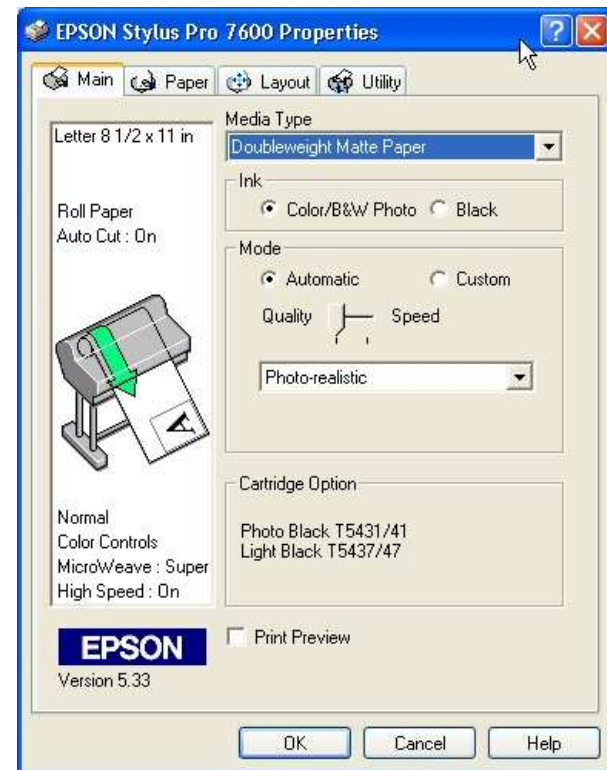


4. On the **Paper** tab:
 - a. Ensure **Paper Source = Roll Paper**
 - b. Ensure **Auto Rotate & Auto-Cut** are Selected (Art Paper must be hand cut)
 - c. Select the **correct orientation** for the image – portrait or landscape
 - d. Set **Paper Size** based on Image Purchase Size:

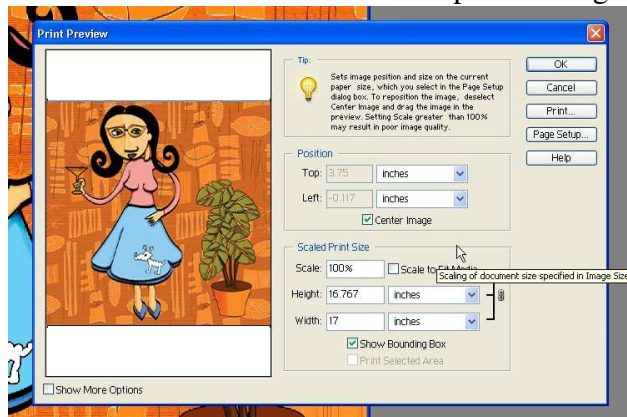
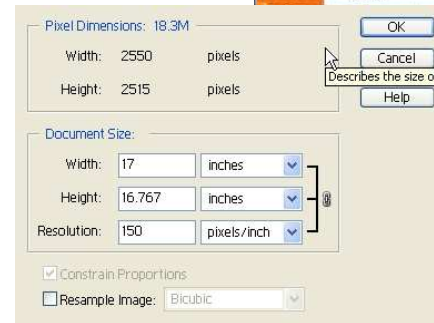
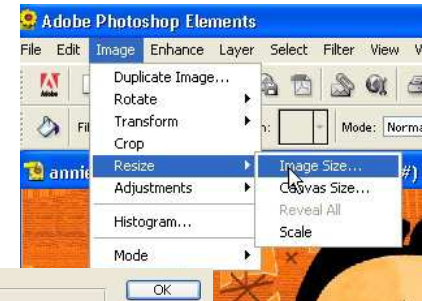
- Cin 8 x 10, Cin 11 x 17, Cin 16 x 24, or Cin 24 x 36

Note: Images vary in actual size and the size ordered reflects the MAXIMUM image size you may print it at.

5. **Click OK** until all the open windows close and you return to viewing just the image



6. On the **Main Toolbar**, Click **Image**, select **Re-Size**, and choose **Image**
 - a. Ensure **Resample Image IS NOT selected**
 - b. Set the **Size** in inches to fit the **Maximum Print Size Ordered**
 - Maximum Print Size is determined by the larger of Height or Width. Try setting either to the maximum allowable size and select whichever allows you to fill the available size the most.
 - For example, if an image is ordered as an 8 x 10 print. If, when you set the width to 10 inches it is 8.5 inches high, you would have to set the Height at 8 inches and print it with the width being slightly shorter than 10 inches
 - c. **Click OK** to accept the changes



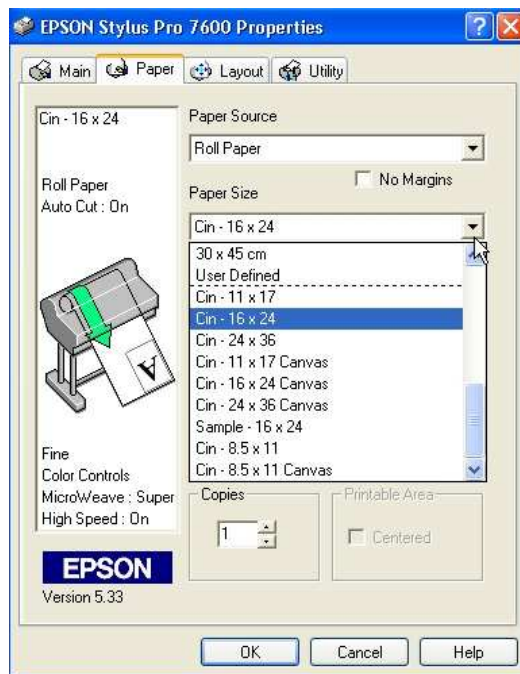
7. Select **Print-Preview** and change the Print Layout (Portrait or Landscape) if the image isn't fitting into the printable area correctly.
8. **Print, Check the Image**, and Close the file but **DO NOT SAVE CHANGES** to the original file as that will prevent you from reprinting easily if you have made a mistake somewhere along the line.
9. **Delete the File** from the FineArtPrints Folder once the Customer has collected their Print as per contract.



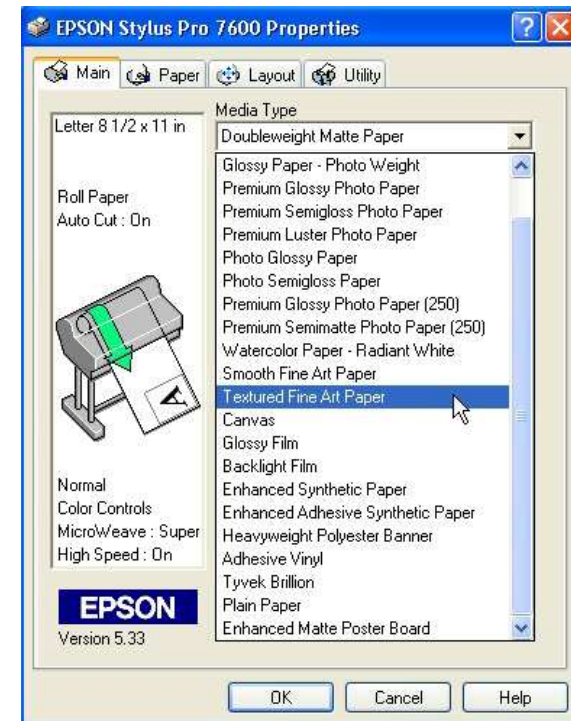
Fine Art Prints

Epson 7600 Printing Procedures Canvas

1. Open the File in the FineArtPrints Folder
2. Click on the **File** tab, Select **Page Set-up**, choose **Printer**, select **Epson 7600** and click on **Properties**
3. On the **Main** tab:
 - a. Select the **Media Type**:
 - i. Choose **Canvas Option**

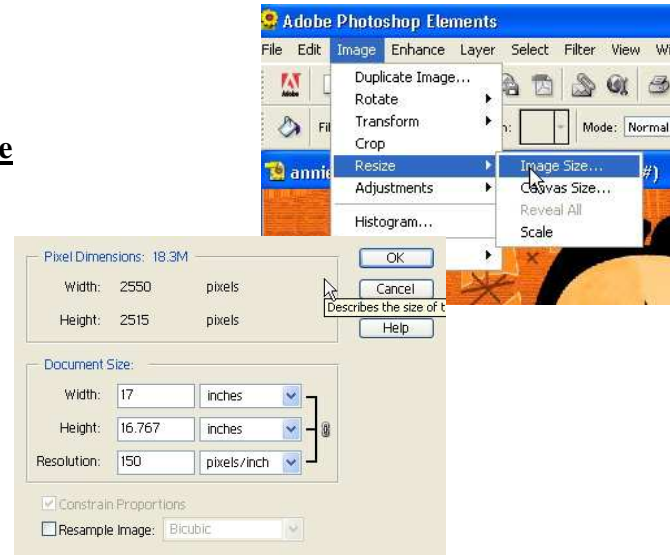


- a. Ensure **Paper Source = Roll Paper**
- b. Ensure **Auto Rotate** is Selected (Canvas must be hand cut)
- c. Select the correct orientation for the image – portrait or landscape
- d. Set **Print Size** based on **Image Purchase Size**:
 - i. Cin 8 x 10 Canvas, Cin 11 x 17 Canvas, Cin 16 x 24 Canvas, or Cin 24 x 36 Canvas
 - ii. Note: Images vary in actual size and the size ordered reflects the **MAXIMUM** image size you may print it at.
 - iii. Canvas Setting gives you a 1.5 inch frame around the image so it can be stretch mounted

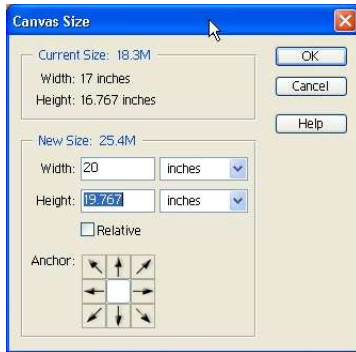


5. Click **OK** until all the open windows close and you return to viewing just the image

6. **Set the Image Size:** YOU MUST DO THIS BEFORE STEP 7!
 On the **Main Toolbar**, Click **Image**, select **Re-Size**, and choose **Image**
 - a. Ensure **Resample Image IS NOT** selected
 - b. Set the **Size** in inches to fit the **Maximum Print Size Ordered**
 - i. Maximum Print Size is determined by the larger of Height or Width. Try setting either to the maximum allowable size and select whichever allows you to fill the available size the most. See explanation in Paper Printing Instructions



7. **Set the Canvas Size:**



- a. On the **Main Toolbar**, Click **Image**, select **Re-Size**, and choose **Canvas**
- b. Add 3 inches to both the Height and Width to give you the frame needed for stretching.
- c. You can colour the border using Photoshop Elements – ask your Representative to show you how!

8. Select **Print-Preview** and change the Print Layout (Portrait or Landscape) if the image isn't fitting into the printable area correctly.

- a. Ensure that the Centre the Image



Option is selected as a Printing Option or you won't get the border printed evenly around the image.

9. **Print**, Check the Image, and Close the file but **DO NOT SAVE CHANGES** to the original file as that will prevent you from reprinting easily if you have made a mistake somewhere along the line.
10. **Delete the File** from the FineArtPrints Folder once the Customer has collected their Print as per contract.